

SOUTH 1/4 COR SEC 22, T18N, R68W. 062662

Q-7

RECEIVED  
LARAMIE COUNTY  
CHEYENNE, WY.

CERTIFIED LAND CORNER RECORDATION

OCT 5 PM 3 59

DESCRIPTION OF CORNER EVIDENCE FOUND, AND ORIGINAL RECORD (if known)

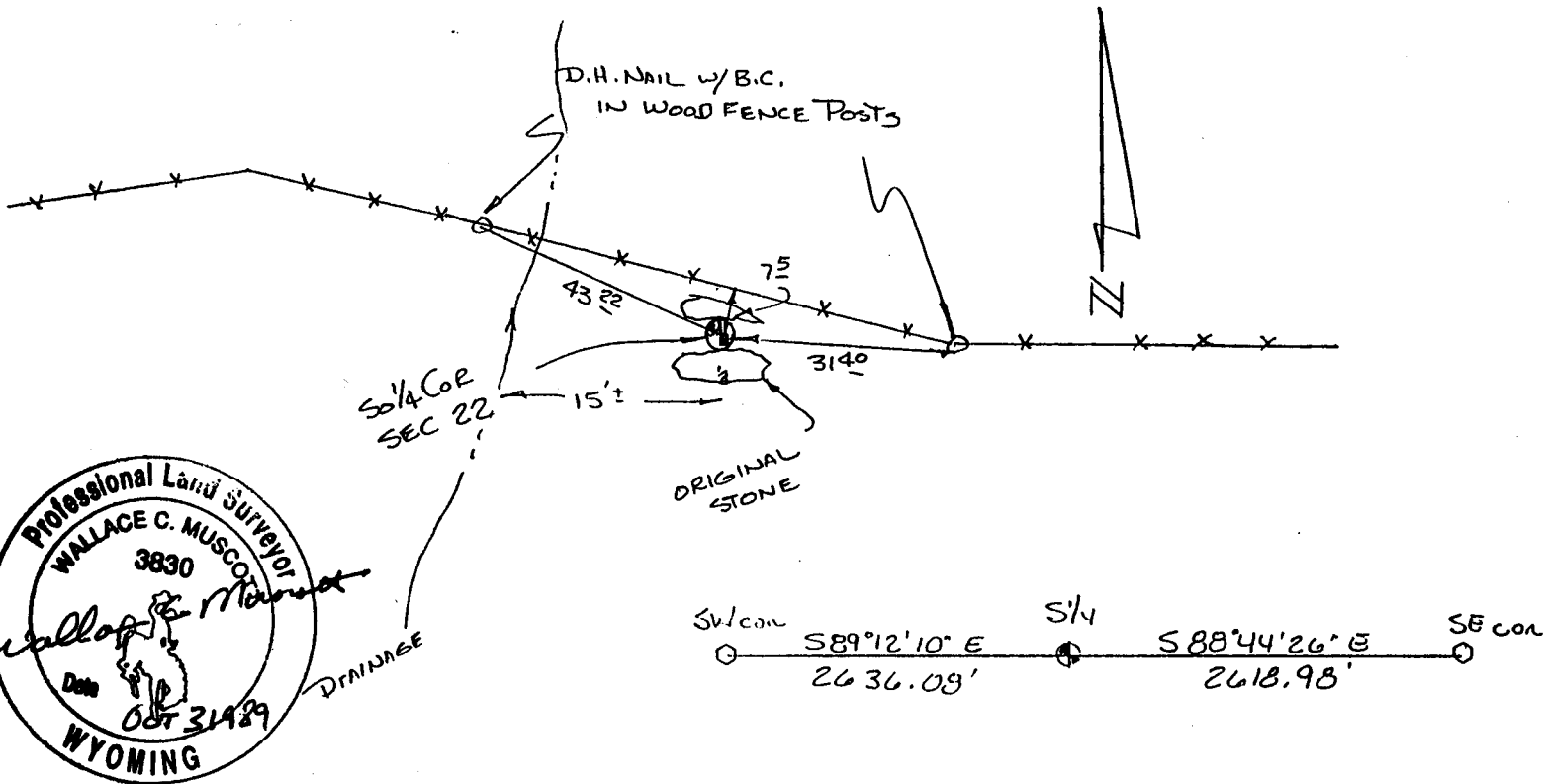
FOUND ORIGINAL CORNER STONE, 12"x7"x4", w/ FAINT 1/4 CHISELED IN SOUTH FACE. ORIGINAL CALL IS FOR 17"x12"x4". THIS STONE LINES UP WITH A FENCE RUNNING TO THE EAST APPROXIMATELY 30' EAST OF IT. ACCEPTED THE STONE.

DESCRIPTION OF MONUMENT AND ACCESSORIES ESTABLISHED TO PERPETUATE THE ORIGINAL LOCATION OF THIS CORNER:

REMOVED ORIG. STONE & IN ITS PLACE, SET A 5/8" x 30" REBAR WITH A CORPS OF ENGINEERS BRASS CAP ON TOP. STAMPED - T18N, R68W  
SET ORIG STONE ALONG SOUTH SIDE - 1/4 SEC 22  
& TIED OFF AS SHOWN BELOW 1989

MAY 15 1989

SKETCH, WITH COURSE AND DISTANCE TO ADJACENT CORNER IF DETERMINED IN THIS SURVEY. (May Sketch or Paste Reproduction on Reverse Side.)



I, Wallace C. Muscott certify that I have carefully performed or reviewed the work done on the diagrammed corner as reported on this recordation form and approve the same.

Wallace C. Muscott 3830  
Signature of Surveyor Registration No.

STATE OF WYOMING,  
Office of Clerk and Recorder,  
County of \_\_\_\_\_

This "corner record" was filed for record on the \_\_\_\_\_ day of \_\_\_\_\_, 19\_\_\_\_, was noted on the cross-index plat and is assigned page No. \_\_\_\_\_, in book No. \_\_\_\_\_.

County Official			
Cross Index No. <u>R-15</u>	T. <u>18 N</u>	R. <u>68 W</u>	Mer. <u>6th</u>
_____	T. _____	R. _____	Mer. _____
_____	T. _____	R. _____	Mer. _____
_____	T. _____	R. _____	Mer. _____
_____	T. _____	R. _____	Mer. _____
_____	T. _____	R. _____	Mer. _____
_____	T. _____	R. _____	Mer. _____